

List of Artists and Prints

☞ **Anonymous**, after Albrecht Dürer from 1512

1- *Pilate Washing His Hands*
(from the *Engraved Passion*), date unknown
Engraving
4 1/2" x 2 7/8"



☞ **Leonard Baskin** (American, 1922-2000)

2- *Death Among the Thistles*, 1959
Wood Engraving
5 7/8" x 7 15/16"



3- *Grieving Othello*, 1973
from a portfolio of ten original Woodcuts to illustrate Shakespeare's *Othello*
12 5/8" x 6 3/4"



4- *Oedipus at Colonus*, 1970
Etching
23 1/2" x 17 1/2"



5- *Othello Young*, 1973
from a portfolio of ten original Woodcuts to illustrate Shakespeare's *Othello*
12 5/8" x 6 3/4"



6- *Untitled*, ca. 1975

An Adamite Vision of Blake, Blake: a Fragment, Blake, an Imagined Death Mask, and Samuel Palmer.

Group of four images on a common sheet.

Wood Engraving

6 7/8" x 7 1/4"



7- **Bill Bippes** (American, b. 1943)

7- *Old Jew in Israel*, no date

Woodcut

7 1/4" x 7 1/4"

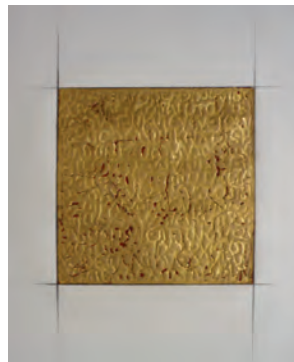


8- **Sandra Bowden** (American, b. 1943)

8- *15th Station of the Cross—Resurrection*, 2003

Collagraph with Gold Leaf and Oil Crayon

16 1/2" x 11"



9- *In the Beginning II*, 2003

Collagraph printed Intaglio and Relief

21 1/8" x 7 7/8"



10- *Mountains were brought forth*, 1982
Collagraph printed Intaglio and Relief
8 3/4" x 8 3/4"



11- *Ye High Hills*, 1982
Collagraph printed Intaglio and Relief
8 3/4" x 8 3/4"



☞ **Katherine Brimberry** (American, b. 1947)
12- *True Image, Station 6*, 2004
Aquatint with Chine Collé on
Tinted Silk Handkerchief
12" x 11 1/4"



☞ **Giovanni B. Castiglione** (Italian, 1616-79)
13- *Un Homme vu de Profil et Torne vers la Droite*,
ca. 1645-50, printed 1798
Etching
4 1/4" x 3 1/4"



14- *Un Vieillard vu de Profil et Torne vers la Droite*,
ca. 1645-50, printed 1798
Etching
4 1/4" x 3 3/16"



Jack Coughlin (American, b. 1932)

15 & 16- *The Fly*, ca. 1975

Etching & Etching printed in colors

12 1/4" x 16"

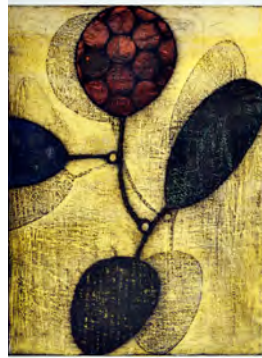


Donald J. Forsythe (American, b. 1955)

17- *Variation on Triple Gong 1951/2004*, 2004

Viscosity Intaglio w/ Stencil Roll and Prismacolor

15 3/4" x 11 3/4"



Donald Furst (American, b. 1953)

18- *All Fall Short*, no date

Mezzotint

2 3/4" x 3 3/4"



19- *High Way*, 2010

Woodcut

13" x 7 3/4"

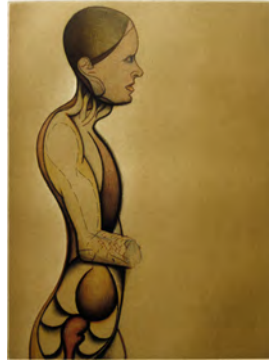


☞ **Gregory Gillespie** (American, 1936-2000)

20- *Standing Figure, Profile*, 1986

Aquatint and Engraving

22" x 15"



☞ **Leah Renee Gregoire** (American, b. 1972)

21- *The Death of St. Clare*, 2005

Engraving

8 1/2" x 6 7/8"



22- *Stations of the Cross 8: Christ Preaches to the Women of Jerusalem*, 2003

Drypoint

13 5/8" x 7"



☞ **Kate Hammett** (American, b. 1959)

23- *Untitled (for Virginia Tech)*, 2007

Painting with Monoprint

5 1/2" x 9 3/8"



Stanley William Hayter (British, 1901-88)

24- *Death by Water*, 1948, 2nd edition printed 1976

Engraving and Scorper

13 7/8" x 23 7/8"



25- *Free Fall*, 1974

Color Engraving and Soft-ground Etching

23 3/8" x 19 3/8"



26- *La leçon d'anatomie (The Anatomy Lesson)*, 1954

Engraving, Aquatint, Soft-ground Etching, Scorper

Printed with Color Relief through three Stencils

15 1/2" x 11 1/2"

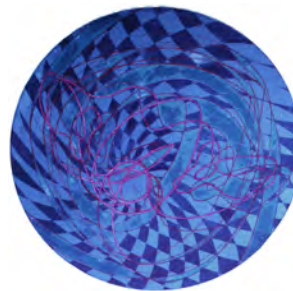


27- *L'Oeil (The Eye)*, 1971

Color Viscosity Etching, Soft-ground with En-

graving, Scorper, Artist's Proof

15 3/8" diameter



28- *Night Forest (Feuilles éparsés)*, 1963

Color Viscosity Etching with Scorper

Artist's Proof on Japon paper

8 1/8" x 6 3/4"



29- *Wind*, 1974
Color Soft-ground Etching
23 5/8" x 17 1/4"



☞ Robert Hodgell (American, 1922-2000)
30- *Job*, no date
Linoleum Print
22 1/2" x 12 1/2"



31- *Judas*, no date
Linoleum Print
21 3/4" x 18 1/4"



☞ Edward Knippers (American, b. 1946)
32- *Christ Falls Again*, 2003
Woodcut
11" x 10 1/4"



33- *Gethsemane*, no date
Woodcut
11" x 9 3/4"




34- Trinity, 2005
Woodcut
16" x 12"



35- *Three Figures*, 1994
Monoprint
12" x 9"



 **Kathe Köllwitz** (German, 1867-1945)
36- *Aufbruch (Revolt/Uprising)*, 1899,
printed after 1931,
Etching with Soft-ground and Aquatint
11 3/4" x 12 1/2"



37- *Beim Denglen (Whetting the Scythe)*, 1905,
printed after 1931
Etching and Drypoint with Soft-ground
Inscribed in plate with "1921"
11" x 6 1/4"



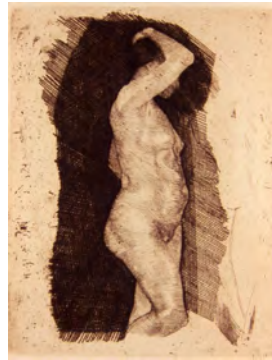
**38- *Frauenkopf (Portrait of a Woman)*, 1905,
printed after 1931
Soft-ground Etching with Drypoint and Aquatint
9" x 5 1/2"**



**39- *Schlachtfeld (Battlefield)*, 1907, printed after 1921
Etching, Soft-ground Etching, Drypoint and
Aquatint
16 1/4" x 20 7/8"**



**40- *Stenhender Weiblicher Akt (Female Nude Study)*,
1900, printed after 1931
Etching
6 7/8" x 5 1/2"**



**41- *Zertretente (The Downtrodden)*, 1900,
printed after 1931
Etching with Aquatint
9 1/4" x 24 3/4"**



☞ **Mauricio Lasansky**

(Argentine-American, b. 1914)

42- *El Maestro*, 1962

Intaglio: Engraving, Etching, Soft-ground, Dry-point, and Aquatint. Printed from three plates: One copper master plate and two zinc color plates
15" x 15"



☞ **Robert E. Marx** (American, b. 1925)

43- *Janus and the Goat*, 1965

Etching and Aquatint

12 1/2" x 8 1/2"



☞ **Barry Moser** (American, b. 1940)

44- *Resurrection*, 1976

Wood Engraving

3" x 4"



☞ **Edvard Munch** (Norwegian, 1863-1944)

45- *Männerkopf (Head of a Man)*, 1906

Restrike printed in 1917

Drypoint

4 3/4" x 3 1/2"



☞ **Krishna Reddy** (Indian, b. 1925)

46- *Forme Rombaute (Falling Figure)*, 1973

Color Viscosity Intaglio

13 1/4" x 17 3/8"



47- *Forme Roude (Dawn Worship)*, 1973

Color Viscosity Intaglio

13 5/8" x 17 1/2"



48- *Floraison (Blossoming)*, 1965

Color Viscosity Intaglio

17 3/8" x 13 1/2"



☞ **Tim Rollins + K.O.S.** (American, b. 1955)

49- *The Marv'lous Work Behold,*

from the portfolio *The Creation (after Haydn)*,
2004

Serigraph test proof

9 3/8" x 7"



☞ **Georges Rouault** (French, 1871-1958)

50- from *The Passion*, 1939

Text by Andre Soares, Engraving by Georges Au-
bert based on Rouault's Drawings

Wood Engraving

5 7/8" x 7 3/4"



51- from *The Passion*, 1939

Text by Andre Soares, Engraving by Georges
Aubert based on Rouault's Drawings

Wood Engraving

11 3/4" x 7 3/4"



52- *He that believeth in me, though he were dead, yet shall he live*, 1923
Aquatint, Drypoint, Burnisher, and Roulette
22 1/2" x 17 1/4"



Guillermo Silva Sanz de Santamaria
(Columbian, b. 1921)

53- *Crucifixión*, 1963
Multiple Plate Color Intaglio, inked à la Poupée
11 1/2" x 18"



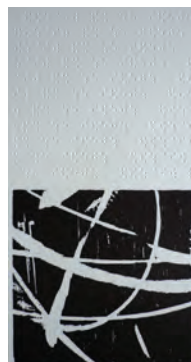
54- *En Busca de Una Flor*, 1968
Multiple Plate Color Intaglio, inked à la Poupée
9 3/4" x 11 5/8"



55- *Luna de Miel*, 1966
Multiple Plate Color Intaglio, inked à la Poupée
9 1/2" x 15"



Kenneth Steinbach (American, b. 1961)
56- *Shine is My Reason*, 2010
Woodcut with Braille
8 3/4" x 4 3/8"



Dick Swift (American, 1918-2010)
57- *The Disrobing of Christ: Station #10*, 1957/58
Mixed Intaglio Processes
17 3/4" x 14 1/2"



58- *Miracle II*, 1958
Color Intaglio, printed from two plates
7 1/2" x 16 3/8"



59- *Oedipus*, 1966
Color Viscosity Intaglio
29 3/4" x 10"



60- *Prophecy*, 1968
Color Viscosity Intaglio with 7 plates
15 1/2" x 35 5/8"



61- *Prophecy II*, 1969
Color Viscosity Intaglio with 6 plates
15 1/2" x 26"



62- *Veneration of the Ancestors*, 1955
Color Intaglio, printed from two plates
17 7/8" x 22"

